



BARRETT BRAE

The Charm of the Country...The Tempo of Town Life

DESIGNED BY **Fischer and Frichtel** INCORPORATED
ST. LOUIS' MOST EXPERIENCED BUILDERS OF CONTEMPORARY HOMES

Welcome

BARRETT BRAE

in Kirkwood is designed for you who love the quiet charm of country living... yet once in a while like to feel part of the faster pace and tempo of city life. To you... this beautiful Barrett Brae home is dedicated.

FISCHER AND FRICHEL, INC. have always taken great pride in the quality of materials and workmanship incorporated in their homes. In particular, in the perfect "finishing" of every home regardless of price. FISCHER AND FRICHEL have further endeavored to increase the quality and livability, rather than to provide unnecessary though fancy gadgets.

This practical policy, through the years, has proved most valuable to the homeowner and has brought increased resale prices for the home.

This tradition of fine workmanship was established by FISCHER AND FRICHEL ten years ago, at which time their first homes were constructed. This tradition has endured and grown with the development of their many subdivisions... Maryknoll and Engler Acres in St. John, Champlain in Florissant, Frostwood in Berkeley, Heather Hill in Olivette, North Oaks in Kansas City, Missouri.

NOW... BARRETT BRAE in Kirkwood.

Fischer and Frichtel INC.

8703 ST. CHARLES ROAD
HARRISON 7-8640

The following four pages contain...

FOUR Plans for your BARRETT BRAE future

The plan of each Barrett Brae Home provides for 3 bedrooms, 2 complete baths, living room, dining room, kitchen, den and carport.

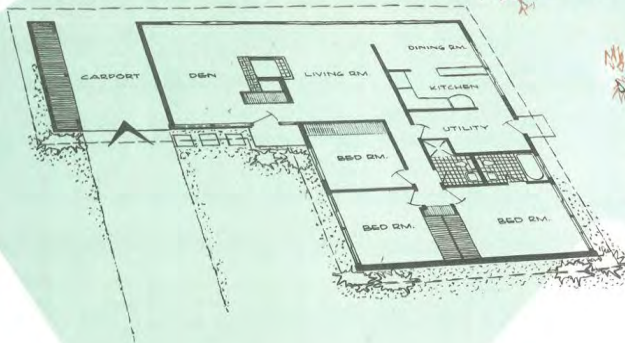
Each home is set upon a large wooded lot, 15000 to 21000 sq. ft., that follows the graceful, natural contour of the land.

Dimensions for individual rooms are shown on Plan 260-V. Some room dimensions apply for each floor plan.

Plan 260 P & R...

The design is L-shaped.

This particular plan and the three pictured here are currently on display in the National Housing Center in Washington, D. C.



Plan 260-M...

This floor plan provides additional space for those who like to entertain on a grand scale. Den adjoins living, living room connects with dining area.

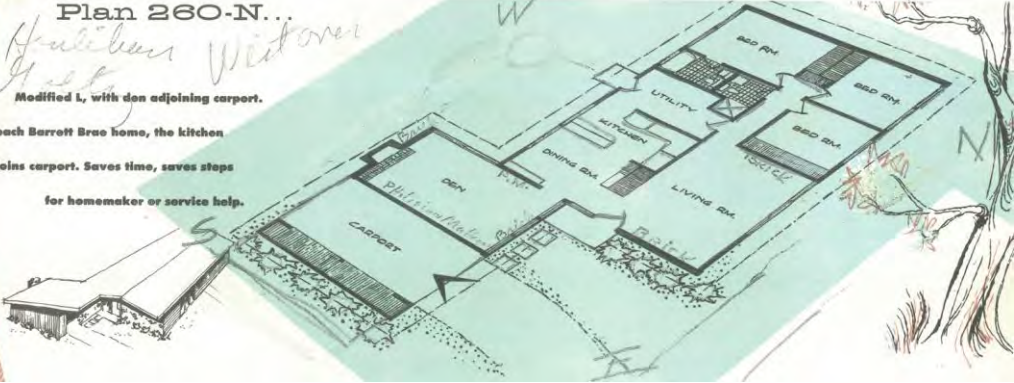


10-9-51
10-10-51

Plan 260-N...

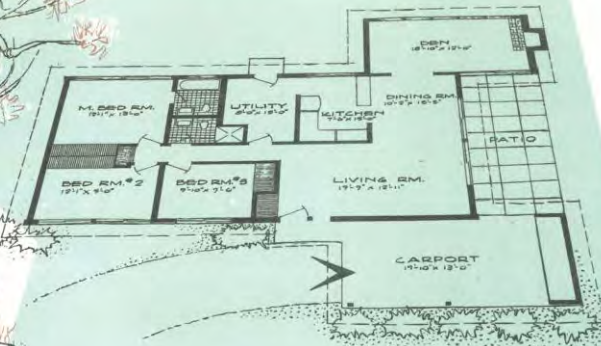
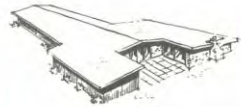
Hughes Victor
Hobby
Modified L, with den adjoining carport.

In each Barrett Brac home, the kitchen adjoins carport. Saves time, saves steps for homemaker or service help.



Plan 260-V...

Features a patio for summertime play. Den and carport parallel each other. All four Barrett Brac floor plans were featured in October, 1955 issue of House and Home.



LIVING ROOM

Looking through the living room onto the patio. Living area is a glory of glass which provides an extensive view of beautiful rolling countryside. Especially lovely in spring and summer. Gas radiant heating provides cozy wintertime comfort inside the home.



DINING ROOM



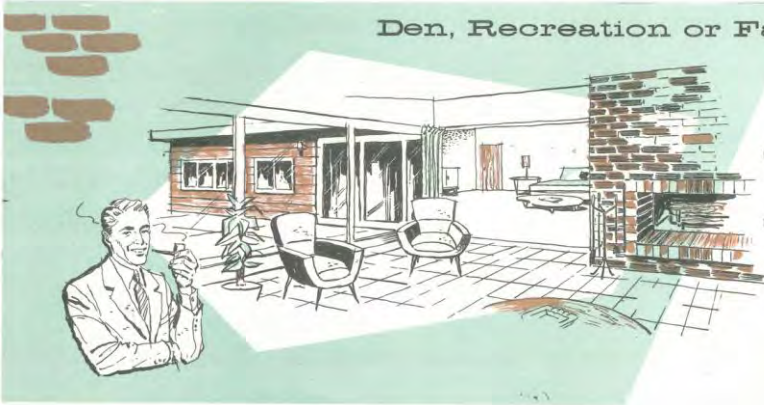
Ideal for a large dinner party
or a cozy candlelit supper for two.
Eating is an exciting adventure
in this beautiful
Barrett Brae dining room.

BEDROOMS



One for the Master! One for the
"Cherubs". One for guests who
linger a while. Each of the three
is designed to make the dark
hours... quiet, peaceful hours.

Den, Recreation or Family Room...



Designed for moments of escape
from a workaday world. The den
is an important part of each
Barrett Brae home. A "fun" room
for the family! Excellent for
small, intimate parties.

KITCHEN



Prefer gas appliances? Like
electric? You can install either or
a combination of both. This
modern Barrett Brae kitchen is
a homemaker's dream come true.
Dimensions and design save
steps, time and work.

BATHROOMS



Two... complete One—with shower! One—with tub! The ceiling of the Master bathroom is a bubble... a translucent plastic skylight. Lets in a shower of sunlight by day, a sparkle of starlight by night.

PATIO



A patio is popular with young folks, older folks, too! You can select a Barrett Brae home complete with patio. Or you can "do-it-yourself". There's ample patio space on every lot.

YOU'RE YEARS AHEAD WITH AN ALL-GAS HOME

Only

Gas 

gives you such modern automatic appliances

The design of the kitchen—the heart of your home—is just the way you want it. Gas cooking units make it easy.

Top burners—the oven-broiler unit—all go just where you want them. And at the perfect working height for you.

The result? Sleek, sweeping beauty and step-saving convenience in your kitchen.

BARRETT BRAE

*The Charm of the Country
The Tempo of Town Life*

Just North of Barrett Station Road...
BARRETT BRAE is located close to churches, elementary and high schools.
Easily accessible to downtown St. Louis and Lambert St. Louis Airport.

See the Barrett Brae Display Home, tastefully furnished
by Modern Interiors, 8820 Gravois.

DESIGNED BY

Fischer and Frichtel

INCORPORATED

